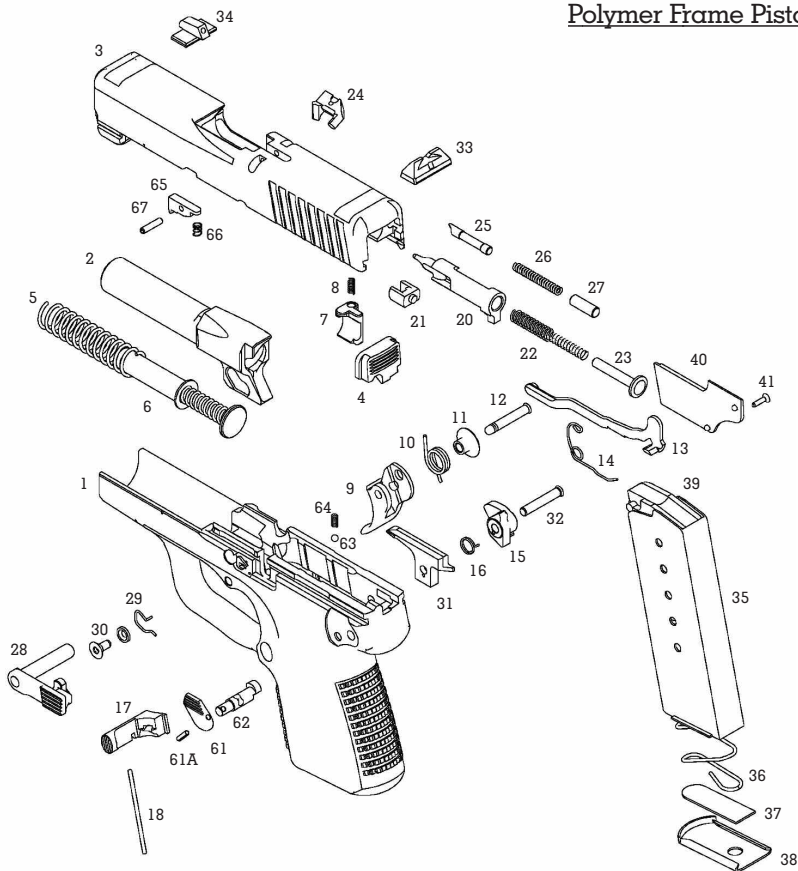


K&H PM9 with External Safety and LCI (Loaded Chamber Indicator)

Polymer Frame Pistol



Technical Data

Operation:

Locked breech, modified "Browning-type" recoil lug

Safety Systems:

Trigger cocking (DA) only, passive striker block. External safety lever, no magazine disconnect.

Ammunition:

9mm

Barrel:

3.0", polygonal rifling

Trigger Weight:

Approx. 7 pounds

Length O/A:

5.3"

Height:

4.0"

Weight:

14 ounces (w/o mag.)

Slide Material:

Stainless steel

Sights:

Drift-adjustable, white bar-dot combat sights

Slide Width:

.90"

Grips / Frame:

Textured polymer

Slide Finish:

Matte stainless steel

Standard Equipment

- Protective Polymer Case, Trigger Lock
- 1 each: 6 rd flush floorplate & 7 rd extended grip magazines

Parts List and Retail Prices

Key & Parts Name	Part #	Price
1 Frame	001	N/A
2 Barrel (PM9 MA)	002	\$140.80
3 Slide (PM9 MA).....	003	\$145.20
4 Slide Back	004	\$26.40
5 Recoil Spring.....	005	\$8.80
6 Recoil Spring Guide Assembly	006	\$14.30
7 Striker Block	007	\$28.60
8 Striker Block Spring.....	008	\$6.60
9 Trigger	009	\$15.40
10 Trigger Spring.....	010	\$6.60
11 Trigger Spacer	011	\$2.20
12 Trigger Pivot Pin.....	012	\$2.20
13 PM9 External Safety Trigger Bar	013	\$14.30
14 Trigger Bar Spring	014	\$6.60
15 Cocking Cam.....	015	\$16.50
16 Cocking Cam Spring	016	\$6.60
17 Magazine Catch Body	017	\$12.10
18 Magazine Catch leaf Spring	018	\$6.60
20 Striker	020	\$16.50
21 Striker Spacer	021	\$6.60
22 Striker Spring	022	\$6.60
23 Striker Spring Guide	023	\$3.30
24 Extractor	024	\$15.40
25 Extractor Pin - Front	025	\$1.10
26 Extractor Spring.....	026	\$6.60
27 Extractor Pin - Back.....	027	\$1.10
28 Slide Stop	028	\$24.20
29 Slide Stop Spring	029	\$6.60
30 Slide Stop Spring Screw & Washer.....	030	\$1.10
31 Ejector	031	\$14.30
32 Cocking Cam Pivot Pin	032	\$2.20
33 Rear Sight.....	033	\$11.00
34 Front Sight.....	034	\$6.60
35 Magazine Tube (6 round).....	035	\$12.10
36 Magazine Spring (6 round).....	036	\$12.10
37 Magazine Base Lock (6 round)	037	\$8.80
38 Magazine Base (6 round).....	038	\$8.80
39 Follower (6 round).....	039	\$11.00
40 Side Panel	040	\$5.50
41 Side Panel Screw.....	041	\$2.20
61 PM9 External Safety Lever	061	\$18.00
61A PM9 External Safety Lever Retaining Pin.....	061	\$1.50
62 PM9 External Safety Cam Pin.....	062	\$20.00
63 PM9 External Safety Plunger	063	\$1.50
64 PM9 External Safety Plunger Spring.....	064	\$2.00
65 PM9 MA LCI Body	065	\$15.50
66 PM9 MA LCI Spring.....	066	\$2.00
67 PM9 MA LCI Pivot Pin	067	\$1.50



SAFETY WARNING

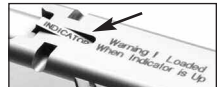
The loaded chamber indicator should never be used as an "unloaded chamber indicator" - meaning that it should never be used by a firearm handler to confirm that a chamber is empty, to the exclusion of manually checking the chamber as explained on page 13 in the Unloading section of the manual. The user must know that the surest method to determine the absence of a round in the chamber is to visually and manually check the chamber of the firearm by pulling and locking the slide to the rear.

Loaded Chamber Indicator

This model is designed to provide physical indication if there is a bullet loaded in the chamber. The product is designed with a lever mounted on the top of slide. The lever is marked as Indicator in red lettering. When a bullet is chambered it pushes the lever upward and out of position. The operator will visually see the lever as it is raised up. Also the operator will be able to feel the indicator as being out of its normal resting position as it will not be flush with the top of the slide, thus warning the operator that the firearm is loaded.



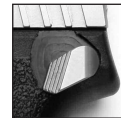
Empty Chamber



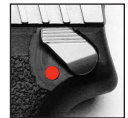
Loaded Chamber

External Safety

This model has, in addition to the internal safety, an external safety that will prevent the firearm from firing when the safety is in safe position. The product has an external lever with two settings. When the lever is pushed up the red dot is visible; the firearm is in the armed position and ready to fire with the pull of the trigger. When the lever is pushed down, the red dot is hidden and the firearm is in safe position and will not function with the pull of the trigger. The safety works in the following sequence. When the lever is in down (Safe) position the connecting cam on the lever pushes the trigger bar out of position thus disconnecting it from the cocking cam. Thus, even when the trigger is pulled, there is no contact between the trigger bar and the cocking cam and thus there is no fire. When the lever is pushed up (fire/armed position) the cam moves out of place and the trigger bar moves up, again connecting with the cocking cam and ready to fire with the pull of the trigger.



Safe Mode



Fire Mode